

## Overhead High Voltage Checklist

Christopher G. Hill

804.916.6591

Chill@durettebradshaw.com

### Applicable to:

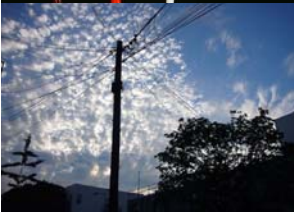
- Persons operating covered equipment that could come within **10 feet** (3.1 meters) of overhead high voltage lines in excess of 600 volts

### Warning Signs:

- Appearance
  - Maximum of 8 floors between erection floor and uppermost permanent floor
  - Weather-resistant
  - Not less than five inches by seven inches
  - Yellow background with black lettering
  - Reads "WARNING – UNLAWFUL TO OPERATE THIS EQUIPMENT WITHIN 10 FEET OF OVERHEAD HIGH VOLTAGE LINES"
- Placement
  - Within equipment
    - Readily visible and legible when operator at controls
  - Outside of equipment
    - Readily visible
    - Legible at 12 feet to other workers

### Prohibited Activities:

- Work that requires any person or equipment to be placed within **10 feet** (3.1 meters) of any line



## Overhead High Voltage Checklist

Christopher G. Hill

804.916.6591

Chill@durettebradshaw.com

Overhead High Voltage checklist continued from page 1...

### **If You Need to Work Closer than 10 Feet to Lines:**

- Procedure
  - Promptly notify owner or operator of high voltage line on working day
    - **Note\***: See Notification Requirements below
  - Negotiate arrangements
    - Consider owner's or operator's service needs
    - Consider protecting the public from danger of lines
  - Line owner or operator has *five working days* from date of request to initiate agreed upon safety arrangements
- Arrangements May Include
  - Placement of temporary mechanical barriers between equipment and lines
  - Temporary de-energization and grounding
  - Temporary relocation or raising of the lines
  - Other such measures owner or operator of the lines finds appropriate

### **Notification Requirements:**

- Name of individual serving notice
- Location or address of tract or parcel of land
- Name, address, and work day telephone number of person responsible
- Field telephone number at site, if available
- Type and extent of proposed work
- Name for whom proposed work is being performed
- Time and date of notice
- Date work is scheduled to commence and date work is to be completed

*\* If delay in starting work is encountered after arrangements made, new notice required.*

**Caution:** Violators can be fined and possibly required to indemnify power line owners against all claims and costs arising from work violating the law

## Overhead High Voltage Checklist

**Christopher G. Hill**

**804.916.6591**

**Chill@durettebradshaw.com**

Overhead High Voltage checklist continued from page 2...

### **General Requirements - Clearances in Power Transmission and Distribution:**

- Approved insulating handle required to approach or take any conductive object to exposed energized parts *if closer than* minimum working distances (see table below)
- Exceptions:
  - Employee insulated or guarded from energized part
  - Energized part insulated or guarded from employee or object at different potential
  - Employee isolated, insulated, or guarded from any other exposed conductive object(s)

### **ALTERNATING CURRENT - MINIMUM DISTANCES**

Voltage range (phase to phase) (kilovolt)	Minimum working and clear hot clear hot stick distance
2.1 to 15 .....	2 ft. 0 in.
15.1 to 35 .....	2 ft. 4 in.
35.1 to 46 .....	2 ft. 6 in.
46.1 to 72.5 .....	3 ft. 0 in.
72.6 to 121 .....	3 ft. 4 in.
138 to 145 .....	3 ft. 6 in.
161 to 169 .....	3 ft. 8 in.
230 to 242 .....	5 ft. 0 in.
345 to 362 .....	(1)7 ft. 0 in.
500 to 552 .....	(1)11 ft. 0 in.
700 to 765 .....	(1)15 ft. 0 in.

Footnote(1) NOTE: For 345-362 kv., 500-552 kv., and 700-765 kv., minimum clear hot stick distance may be reduced provided that such distances are not less than the shortest distance between the energized part and the grounded surface

